

# GIGA X8

## Changing the filter

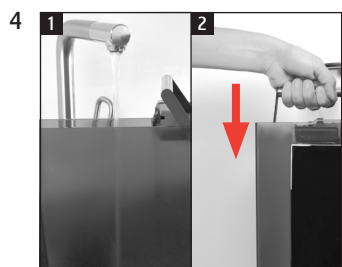
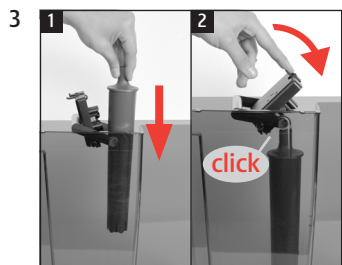
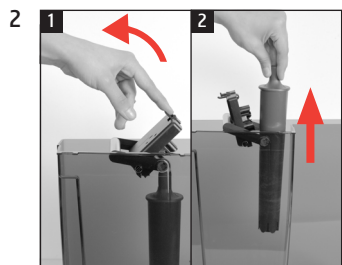
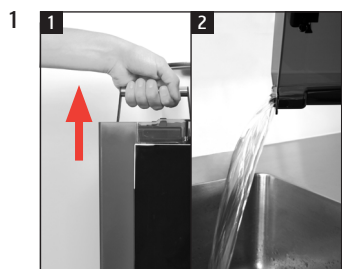
Equipment required:  
Filter cartridge CLARIS Pro Smart  
1 item (Art. 72819)



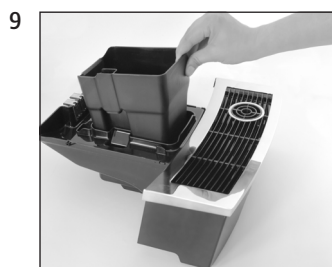
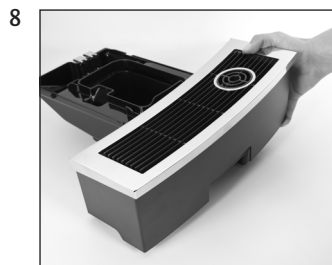
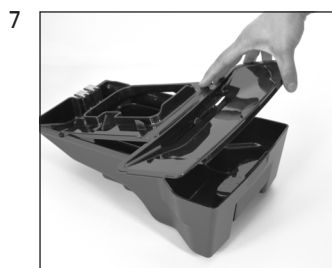
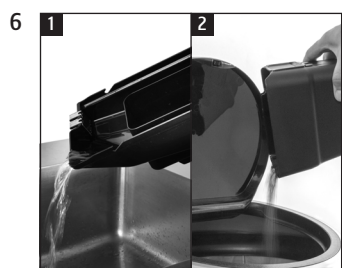
These short instructions do not replace the 'GIGA X8 Instructions for Use'. Make sure you read and observe the safety information and warnings first in order to avoid hazards.

### 'Display'

Precondition: 'Change the filter'



'Filter operation' / 'Saved'  
'Filter is being rinsed'  
'Empty drip tray.'



'Filter operation' / 'Filter rinsing complete'